



KENTUCKY

SUMMARY

- Kentucky is in the red zone for cases, indicating 101 or more new cases per 100,000 population, with the 21st highest rate in the country. Kentucky is in the orange zone for test positivity, indicating a rate between 8.0% and 10.0%, with the 24th highest rate in the country.
- Kentucky has seen stability in new cases and a decrease in test positivity.
- The following three counties had the highest number of new cases over the last 3 weeks: 1. Jefferson County, 2. Fayette County, and 3. Kenton County. These counties represent 31.8% of new cases in Kentucky.
- 78% of all counties in Kentucky have moderate or high levels of community transmission (yellow, orange, or red zones), with 32% having high levels of community transmission (red zone).
- During the week of Oct 26 - Nov 1, 27% of nursing homes had at least one new resident COVID-19 case, 40% had at least one new staff COVID-19 case, and 8% had at least one new resident COVID-19 death.
- Kentucky had 274 new cases per 100,000 population, compared to a national average of 209 per 100,000.
- Current staff deployed from the federal government as assets to support the state response are: 1 to support operations activities from FEMA and 7 to support medical activities from VA.
- The federal government has supported surge testing in Louisville, KY.
- Between Oct 31 - Nov 6, on average, 282 patients with confirmed COVID-19 and 105 patients with suspected COVID-19 were reported as newly admitted each day to hospitals in Kentucky. An average of greater than 95% of hospitals reported either new confirmed or new suspected COVID patients each day during this period.

RECOMMENDATIONS

- The silent community spread that precedes and continues throughout surges can only be identified and interrupted through proactive and increased testing and surveillance, as universities have done with frequent (weekly) required testing.
- This approach can be adapted to communities/counties in the orange or red zone with proactive weekly testing of groups from the community (teachers, community college students, county workers, staff in crowded or congregate settings, all hospital personnel, large private sector employers). These cases should be triangulated with cases among long-term care facility (LTCF) staff to identify geographic areas with high numbers of asymptomatic and pre-symptomatic cases, which should then trigger widespread proactive testing among 18-40 year-olds and isolation of positive cases. These efforts to identify and reduce asymptomatic transmission should run concurrently with testing of symptomatic persons and contact tracing of cases.
- Expanded, strategic use of point-of-care antigen tests with immediate results will be critical to expanding this model into the community; these tests should be used among all individuals independent of symptoms in orange and red counties. Requiring use only in symptomatic individuals is preventing adequate testing and control of the pandemic.
- Antigen tests perform well in the highly infectious window and will be effective in identification of asymptomatic and pre-symptomatic infectious cases.
 - Antigen tests do not perform well after 8-10 days post infection when nucleic acid cycle times are greater than 30.
 - All antigen results must be reported with both the number of positive results and total tests conducted; positives must be reported as COVID cases.
- Proactive testing must be part of the mitigation efforts inclusive of mask wearing, physical distancing, hand hygiene, and immediate isolation, contact tracing, and quarantine.
- With outbreaks in correctional facilities, weekly testing of correctional staff can identify positives before spread is severe.
- Effective practices to decrease transmission in public spaces include limiting restaurant indoor capacity to less than 50% and restricting hours until cases and test positivity decrease to the yellow zone.
- Message to communities basic actions they should take now:
 - Do not gather without a mask with individuals living outside of your household.
 - Always wear a mask in public places.
 - Stop gatherings beyond immediate household until cases and test positivity are in the yellow zone.
 - Get your flu shot.
- In accordance with CDC guidelines, masks must be worn by students and teachers in K-12 schools.
- Work with hospitals, local leaders, and chambers of commerce to create and communicate messages for Kentuckians to adopt about the risks of gatherings outside the home and the importance of wearing a mask. These messages should be tailored to rural communities.
- Ensure all hospitals, including rural hospitals, have access to antivirals, antibodies, PPE, and ventilators. Work through FEMA to secure supplies when stocks of less than a week's supply is confirmed.
- Ensure students continue their mitigation behaviors to ensure no further outbreaks on or off campus. Ensure appropriate testing and behavior change in the 10 days prior to student departure to hometowns for the holiday season.
- 40% of nursing homes have COVID positive staff, indicating unmitigated community spread. Ensure all nursing homes, assisted living, and elderly care sites have full testing capacity and are isolating positive staff and residents.
- Specific, detailed guidance on community mitigation measures can be found on the [CDC website](#).





KENTUCKY

STATE REPORT | 11.08.2020

	STATE, % CHANGE FROM PREVIOUS			
	STATE	WEEK	FEMA/HHS REGION	UNITED STATES
NEW COVID-19 CASES (RATE PER 100,000)	12,263 (274)	+7%	106,660 (159)	687,656 (209)
VIRAL (RT-PCR) LAB TEST POSITIVITY RATE	9.0%	-1.2%*	7.8%	8.4%
TOTAL VIRAL (RT-PCR) LAB TESTS (TESTS PER 100,000)	102,111** (2,286**)	-9%**	1,149,018** (1,717**)	7,362,570** (2,243**)
COVID-19 DEATHS (RATE PER 100,000)	68 (1.5)	-15%	1,343 (2.0)	6,542 (2.0)
SNFs WITH ≥1 NEW RESIDENT COVID-19 CASE	27%	+7%*	15%	15%
SNFs WITH ≥1 NEW STAFF COVID-19 CASE	40%	+4%*	29%	29%
SNFs WITH ≥1 NEW RESIDENT COVID-19 DEATH	8%	+2%*	6%	5%

* Indicates absolute change in percentage points.

** Due to delayed reporting, this figure may underestimate total diagnostic tests and week-on-week changes in diagnostic tests.

DATA SOURCES – Additional data details available under METHODS

Note: Some dates may have incomplete data due to delays in reporting. Data may be backfilled over time, resulting in week-to-week changes.

Cases and Deaths: State values are calculated by aggregating county-level data from USAFacts; therefore, the values may not match those reported directly by the state. Data is through 11/6/2020; previous week is 10/24 - 10/30.

Testing: CELR (COVID-19 Electronic Lab Reporting) state health department-reported data through 11/4/2020. Previous week is 10/22 - 10/28.

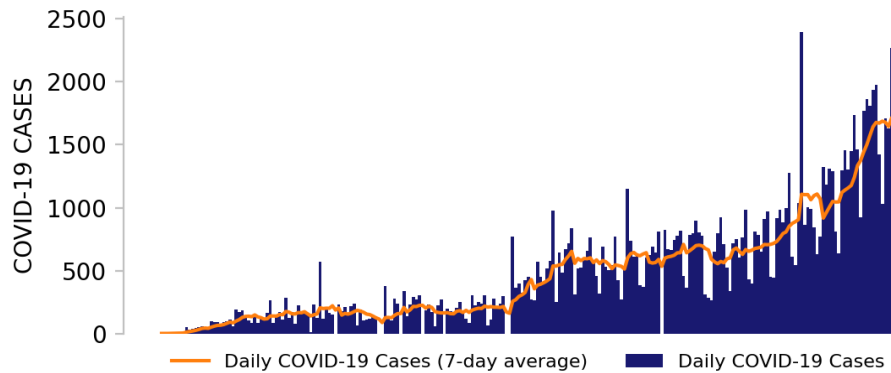
SNFs: Skilled nursing facilities. National Healthcare Safety Network. Data are reported separately for cases among residents and staff. Data is through 11/1/2020, previous week is 10/19-10/25. Facilities that are undergoing reporting quality review are not included in the table, but may be included in other NHSN analyses.



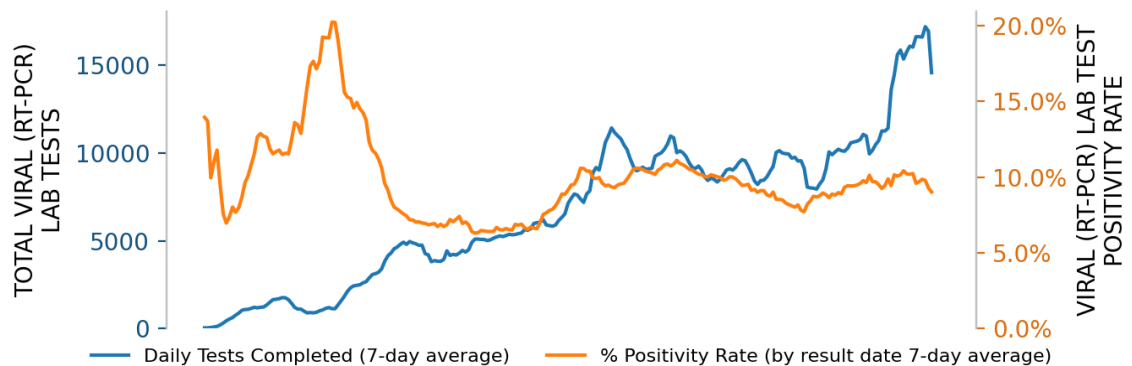
KENTUCKY

STATE REPORT | 11.08.2020

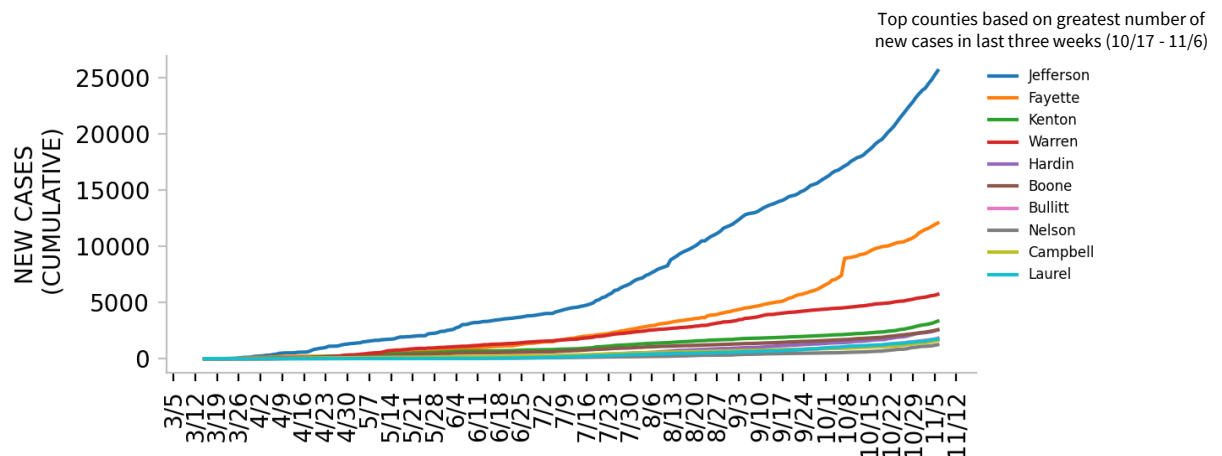
NEW CASES



TESTING



TOP COUNTIES



DATA SOURCES – Additional data details available under METHODS

Note: Some dates may have incomplete data due to delays in reporting. Data may be backfilled over time, resulting in week-to-week changes.

Cases: State values are calculated by aggregating county-level data from USAFacts; therefore, the values may not match those reported directly by the state. Data is through 11/6/2020.

Testing: CELR (COVID-19 Electronic Lab Reporting) state health department-reported data through 11/4/2020.

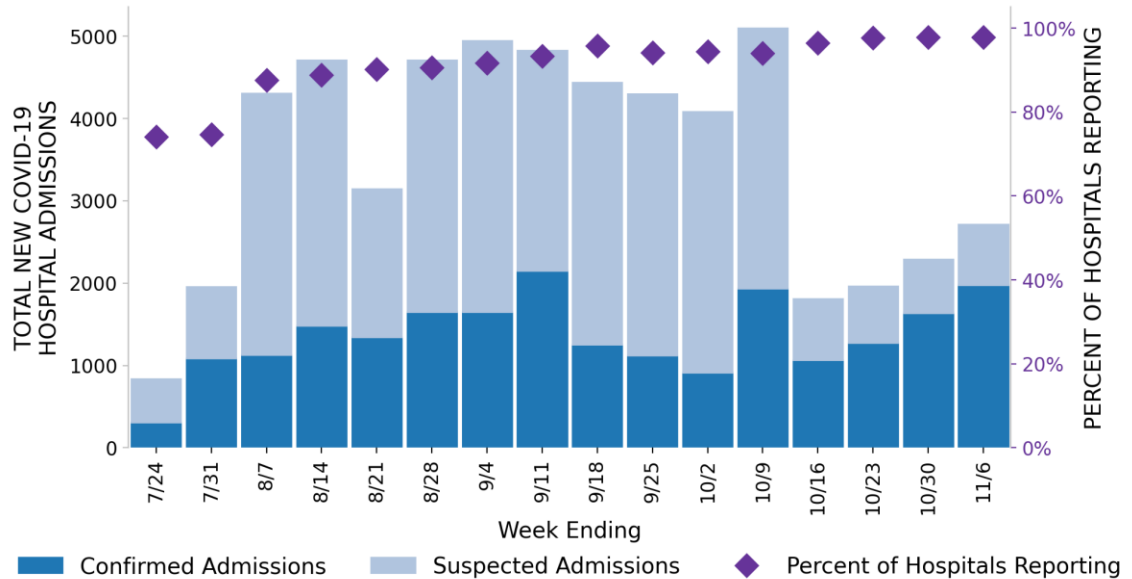


KENTUCKY

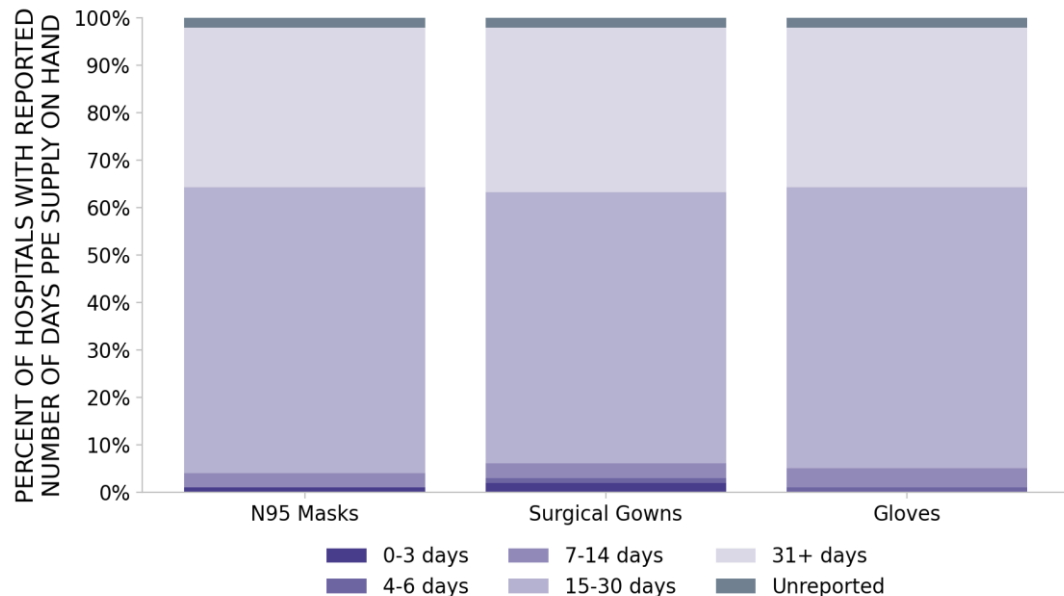
STATE REPORT | 11.08.2020

98 hospitals are expected to report in Kentucky

HOSPITAL ADMISSIONS



HOSPITAL PPE SUPPLIES



DATA SOURCES – Additional data details available under METHODS

Hospitalizations: Unified hospitalization dataset in HHS Protect. These data exclude psychiatric, rehabilitation, and religious non-medical hospitals. In addition, hospitals explicitly identified by states/regions as those from which we should not expect reports were excluded from the percent reporting figure.

PPE: Unified hospitalization dataset in HHS Protect. These data exclude psychiatric, rehabilitation, and religious non-medical hospitals. In addition, hospitals explicitly identified by states/regions as those from which we should not expect reports were excluded from the percent reporting figure. Values presented show the latest reports from hospitals in the week ending 11/4/2020.



KENTUCKY

STATE REPORT | 11.08.2020

COVID-19 COUNTY AND METRO ALERTS*

Top 12 shown in table (full lists below)

METRO AREA (CBSA)

COUNTIES

LOCALITIES IN RED ZONE

7
▼ (-2)

Louisville/Jefferson County
Paducah
Bardstown
Evansville
Middlesborough
Campbellsville
Mayfield

39
▼ (-5)

Fayette
Warren
Boone
Bullitt
Nelson
Campbell
Laurel
McCracken
Pike
Shelby
Floyd
Henderson

LOCALITIES IN ORANGE ZONE

6
■ (+0)

Lexington-Fayette
Cincinnati
London
Elizabethtown-Fort Knox
Bowling Green
Mount Sterling

23
▲ (+6)

Jefferson
Kenton
Hardin
Hart
Oldham
Marion
Boyd
Knox
Monroe
Meade
Rowan
Lincoln

LOCALITIES IN YELLOW ZONE

9
▲ (+1)

Owensboro
Glasgow
Huntington-Ashland
Richmond-Berea
Clarksville
Madisonville
Danville
Central City
Maysville

32
▲ (+2)

Barren
Daviess
Christian
Madison
Hopkins
Jessamine
Whitley
Scott
Clark
Lee
Garrard
Rockcastle

Change from previous week's alerts:

▲ Increase

■ Stable

▼ Decrease

All Red Counties: Fayette, Warren, Boone, Bullitt, Nelson, Campbell, Laurel, McCracken, Pike, Shelby, Floyd, Henderson, Elliott, Montgomery, Bell, Clay, Johnson, Logan, Greenup, Graves, Marshall, Grayson, Taylor, Larue, Caldwell, Spencer, McLean, Magoffin, Jackson, Breckinridge, Henry, Webster, Lewis, Hancock, Powell, Livingston, Nicholas, Ballard, Trimble

All Orange Counties: Jefferson, Kenton, Hardin, Hart, Oldham, Marion, Boyd, Knox, Monroe, Meade, Rowan, Lincoln, Harlan, Washington, Knott, Bourbon, Metcalfe, Morgan, Trigg, Owsley, Wolfe, Carlisle, Menifee

All Yellow Counties: Barren, Daviess, Christian, Madison, Hopkins, Jessamine, Whitley, Scott, Clark, Lee, Garrard, Rockcastle, Boyle, Carter, Martin, Muhlenberg, Allen, Mercer, Woodford, Grant, Wayne, Fleming, Simpson, Russell, Estill, Union, Butler, Mason, Harrison, Casey, Bath, Lyon

* Localities with fewer than 10 cases last week have been excluded from these alerts.

Note: Lists of red, orange, and yellow localities are sorted by the number of new cases in the last 3 weeks, from highest to lowest. Some dates may have incomplete data due to delays in reporting. Data may be backfilled over time, resulting in week-to-week changes.

DATA SOURCES – Additional data details available under METHODS

Cases and Deaths: State values are calculated by aggregating county-level data from USAFacts; therefore, the values may not match those reported directly by the state. Data is through 11/6/2020.

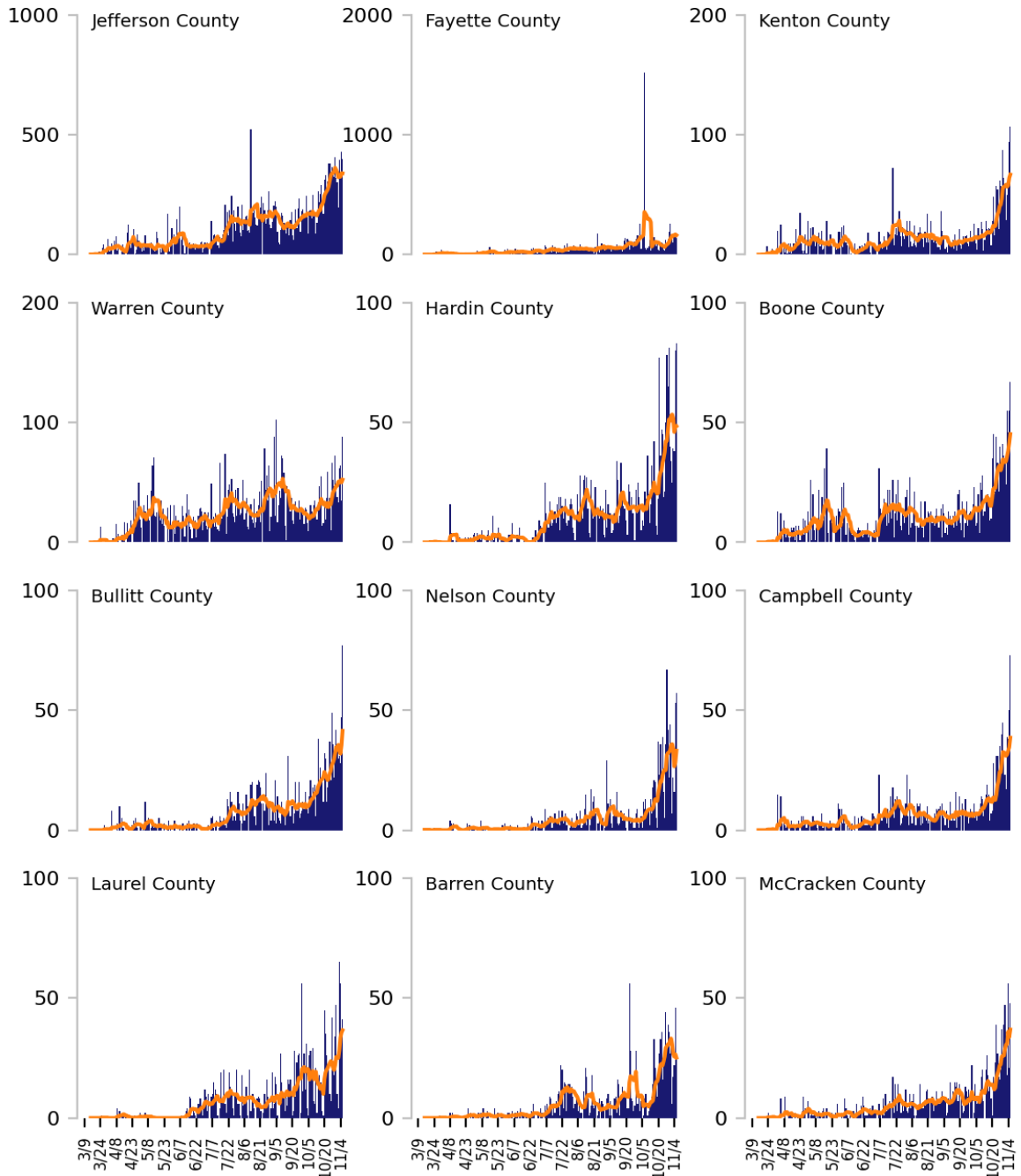
Testing: CELR (COVID-19 Electronic Lab Reporting) state health department-reported data through 11/4/2020.



Top 12 counties based on number of new cases in the last 3 weeks

— Daily COVID-19 Cases (7-day average) — Daily COVID-19 Cases

TOTAL DAILY CASES



DATA SOURCES – Additional data details available under **METHODS**

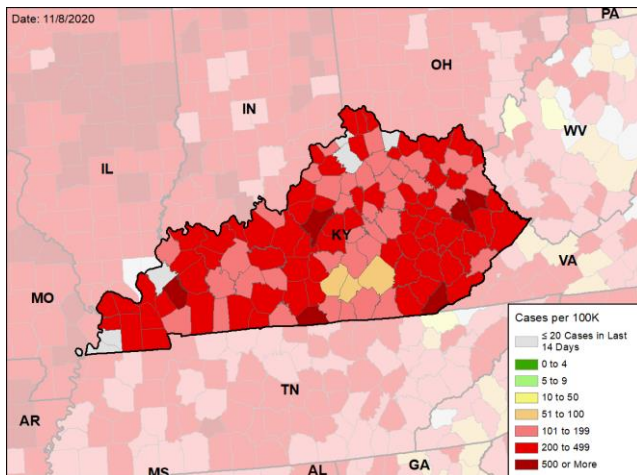
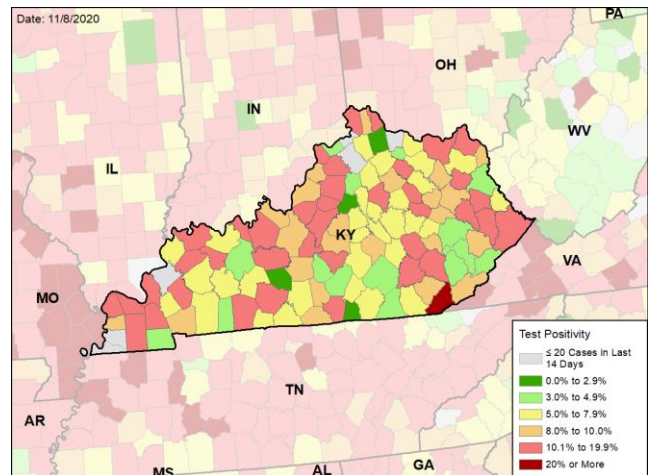
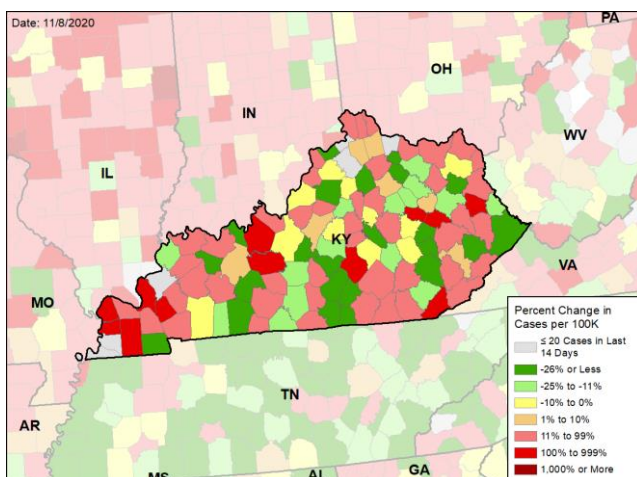
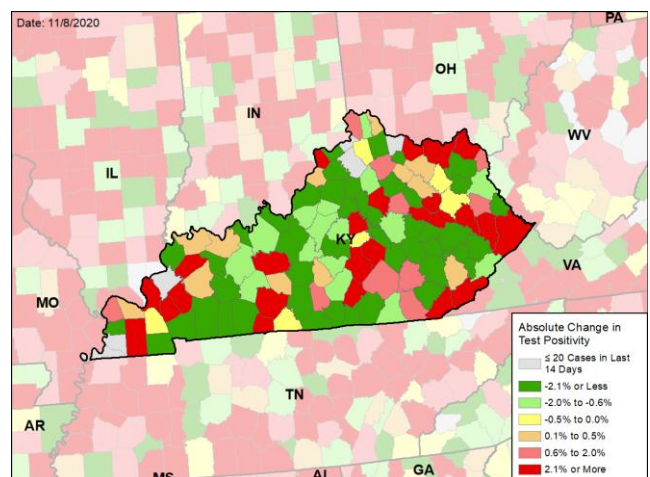
Cases: State values are calculated by aggregating county-level data from USAFacts; therefore, the values may not match those reported directly by the state. Data is through 11/6/2020. Last 3 weeks is 10/17 - 11/6.



KENTUCKY

STATE REPORT | 11.08.2020

CASE RATES AND VIRAL LAB TEST POSITIVITY

NEW CASES PER 100,000**VIRAL (RT-PCR) LABORATORY TEST POSITIVITY****WEEKLY CHANGE IN NEW CASES PER 100,000****WEEKLY CHANGE IN VIRAL (RT-PCR) LABORATORY TEST POSITIVITY**

DATA SOURCES – Additional data details available under METHODS

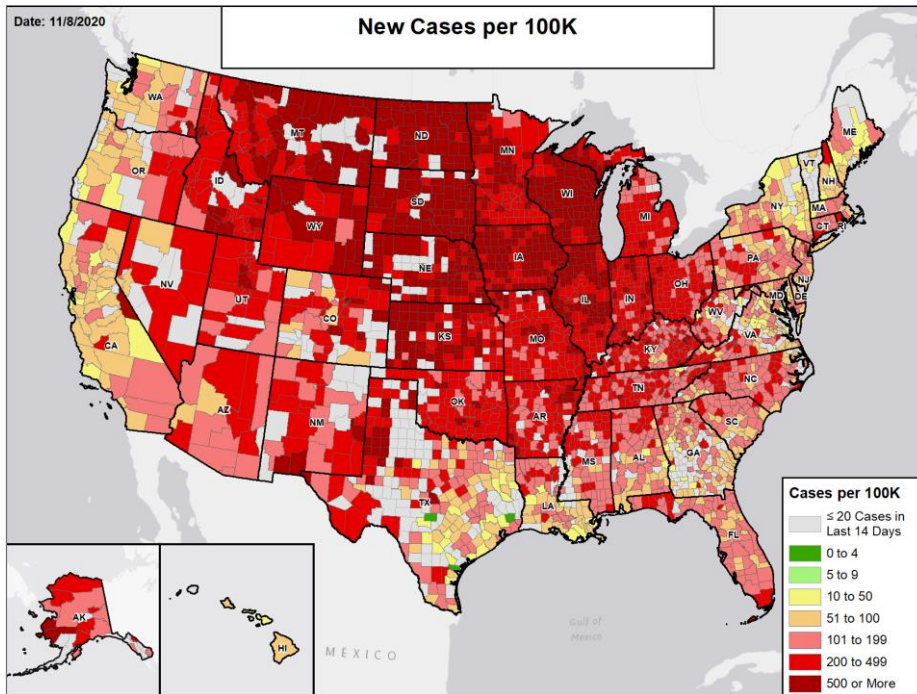
Note: Some dates may have incomplete data due to delays in reporting. Data may be backfilled over time, resulting in week-to-week changes.
Cases: State values are calculated by aggregating county-level data from USAFacts; therefore, the values may not match those reported directly by the state. Data is through 11/6/2020. Previous week is 10/24 - 10/30.

Testing: CELR (COVID-19 Electronic Lab Reporting) state health department-reported data through 11/4/2020. Previous week is 10/22 - 10/28.



National Picture

NEW CASES PER 100,000

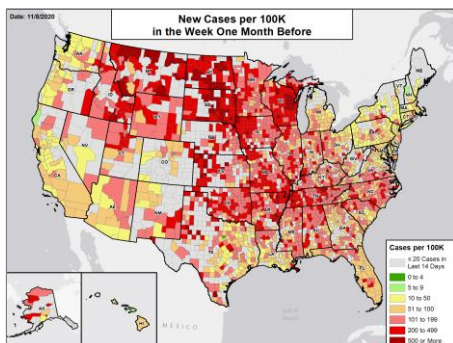


NATIONAL RANKING OF NEW CASES PER 100,000

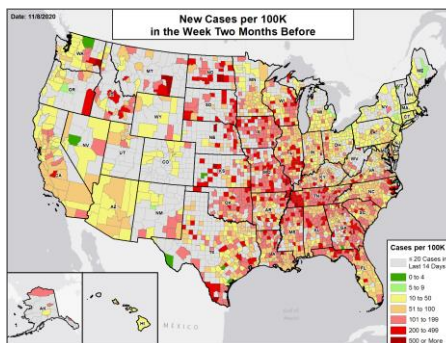
National Rank	State	National Rank	State
1	ND	27	MS
2	SD	28	TX
3	WI	29	WV
4	IA	30	NC
5	WY	31	FL
6	NE	32	AZ
7	MT	33	AL
8	IL	34	NJ
9	UT	35	PA
10	MN	36	MA
11	KS	37	SC
12	ID	38	DE
13	AK	39	MD
14	IN	40	GA
15	CO	41	VA
16	MO	42	WA
17	RI	43	OR
18	NM	44	LA
19	MI	45	DC
20	AR	46	CA
21	KY	47	NY
22	OK	48	NH
23	OH	49	ME
24	NV	50	HI
25	TN	51	VT
26	CT		

NEW CASES PER 100,000 IN THE WEEK:

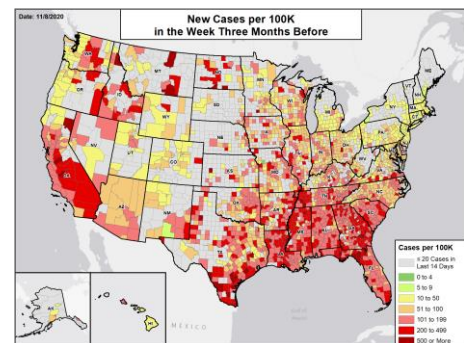
ONE MONTH BEFORE



TWO MONTHS BEFORE



THREE MONTHS BEFORE



DATA SOURCES

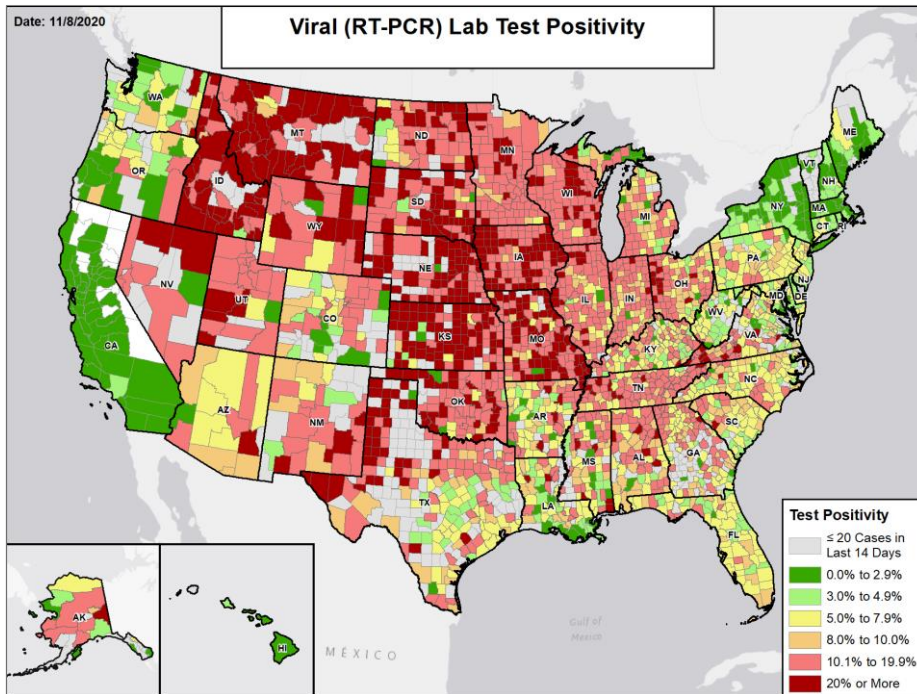
Note: Some dates may have incomplete data due to delays in reporting. Data may be backfilled over time, resulting in week-to-week changes.

Cases: County-level data from USAFacts through 11/6/2020. The week one month before is 10/3 - 10/9; the week two months before is 9/5 - 9/11; the week three months before is 8/8 - 8/14.



National Picture

VIRAL (RT-PCR) LAB TEST POSITIVITY

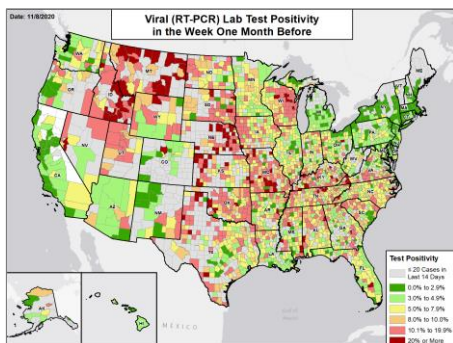


NATIONAL RANKING OF TEST POSITIVITY

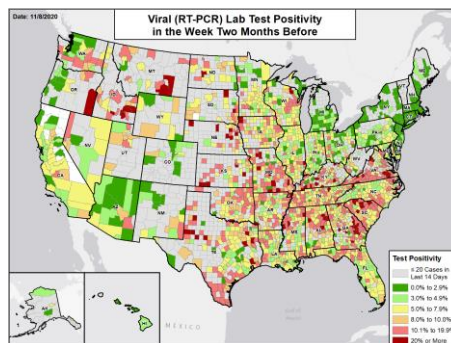
National Rank	State	National Rank	State
1	MT	27	AR
2	ID	28	VA
3	SD	29	AZ
4	IA	30	GA
5	KS	31	OH
6	NE	32	NC
7	ND	33	PA
8	MO	34	FL
9	UT	35	OR
10	WI	36	NJ
11	OK	37	CT
12	MN	38	WV
13	NV	39	MD
14	NM	40	WA
15	IN	41	LA
16	IL	42	DE
17	TN	43	RI
18	TX	44	NH
19	CO	45	CA
20	MS	46	HI
21	AL	47	ME
22	MI	48	NY
23	WY	49	DC
24	KY	50	MA
25	AK	51	VT
26	SC		

VIRAL (RT-PCR) LAB TEST POSITIVITY IN THE WEEK:

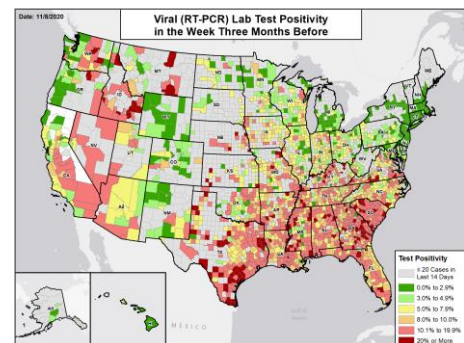
ONE MONTH BEFORE



TWO MONTHS BEFORE



THREE MONTHS BEFORE



DATA SOURCES

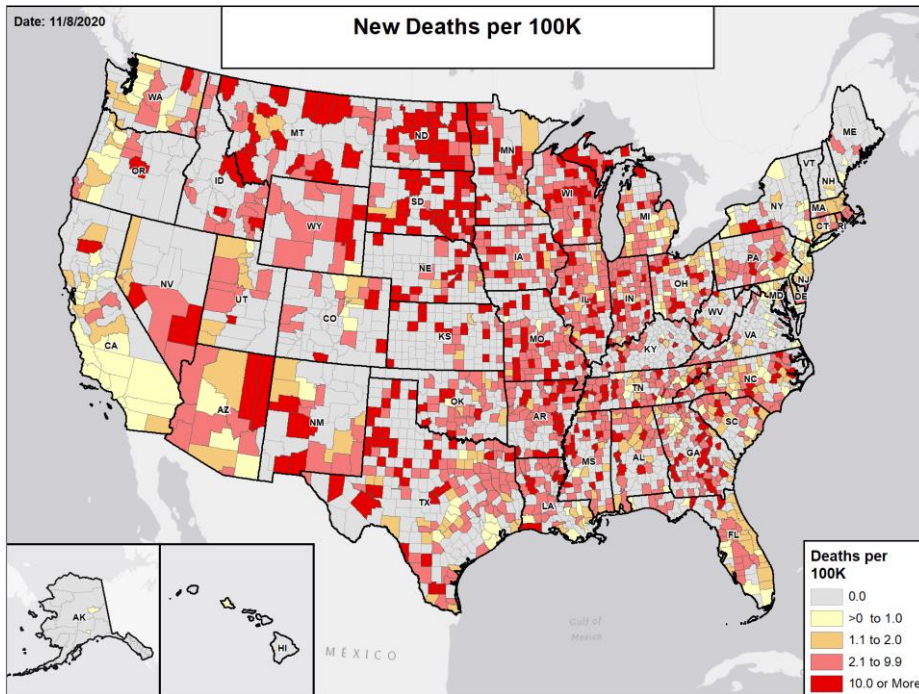
Note: Some dates may have incomplete data due to delays in reporting. Data may be backfilled over time, resulting in week-to-week changes.

Testing: Combination of CELR (COVID-19 Electronic Lab Reporting) state health department-reported data and HHS Protect laboratory data (provided directly to Federal Government from public health labs, hospital labs, and commercial labs) through 11/4/2020. The week one month before is 10/1 - 10/7; the week two months before is 9/3 - 9/9; the week three months before is 8/6 - 8/12.



National Picture

NEW DEATHS PER 100,000

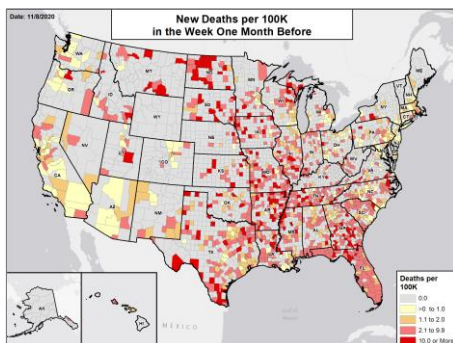


NATIONAL RANKING OF NEW DEATHS PER 100,000

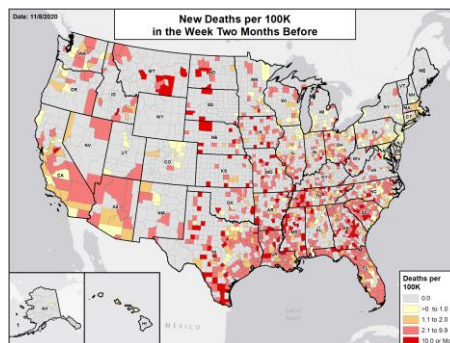
National Rank	State	National Rank	State
1	ND	27	SC
2	SD	28	GA
3	AR	29	MA
4	MT	30	LA
5	WI	31	OH
6	KS	32	CO
7	IN	33	NY
8	NM	34	CT
9	IA	35	KY
10	MO	36	UT
11	WY	37	PA
12	MS	38	FL
13	ID	39	DE
14	TN	40	OR
15	IL	41	WA
16	NE	42	MD
17	MN	43	NJ
18	OK	44	DC
19	AZ	45	CA
20	AL	46	VA
21	NC	47	NH
22	TX	48	AK
23	WV	49	ME
24	NV	50	HI
25	MI	51	VT
26	RI		

NEW DEATHS PER 100,000 IN THE WEEK:

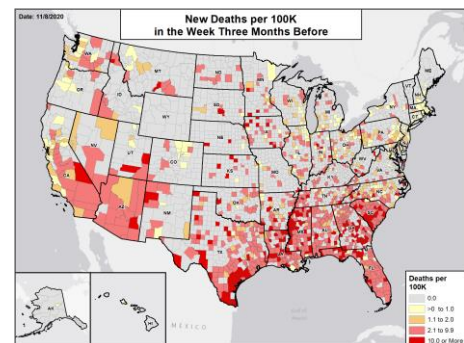
ONE MONTH BEFORE



TWO MONTHS BEFORE



THREE MONTHS BEFORE



DATA SOURCES

Note: Some dates may have incomplete data due to delays in reporting. Data may be backfilled over time, resulting in week-to-week changes.

Deaths: County-level data from USAFacts through 11/6/2020. The week one month before is 10/3 - 10/9; the week two months before is 9/5 - 9/11; the week three months before is 8/8 - 8/14.



METHODS

STATE REPORT | 11.08.2020

COLOR THRESHOLDS: Results for each indicator should be taken in context of the findings for related indicators (e.g., changes in case incidence and testing volume). Values are rounded before color classification.

Metric	Dark Green	Light Green	Yellow	Orange	Red
New cases per 100,000 population per week	≤4	5 – 9	10 – 50	51 – 100	≥101
Percent change in new cases per 100,000 population	≤-26%	-25% – -11%	-10% – 0%	1% – 10%	≥11%
Diagnostic test result positivity rate	≤2.9%	3.0% – 4.9%	5.0% – 7.9%	8.0% – 10.0%	≥10.1%
Change in test positivity	≤-2.1%	-2.0% – -0.6%	-0.5% – 0.0%	0.1% – 0.5%	≥0.6%
Total diagnostic tests resulted per 100,000 population per week	≥2001	1001 – 2000	750 – 1000	500 – 749	≤499
Percent change in tests per 100,000 population	≥26%	11% – 25%	1% – 10%	-10% – 0%	≤-11%
COVID-19 deaths per 100,000 population per week	0.0		0.1 – 1.0	1.1 – 2.0	≥2.1
Percent change in deaths per 100,000 population	≤-26%	-25% – -11%	-10% – 0%	1% – 10%	≥11%
Skilled Nursing Facilities with at least one resident COVID-19 case, death	0%		1% – 5%		≥6%
Change in SNFs with at least one resident COVID-19 case, death	≤-2%		-1% – 1%		≥2%

DATA NOTES

- Some dates may have incomplete data due to delays in reporting. Data may be backfilled over time, resulting in week-to-week changes. It is critical that states provide as up-to-date data as possible.
- Cases and deaths:** County-level data from USAFacts as of 22:13 EST on 11/08/2020. State values are calculated by aggregating county-level data from USAFacts; therefore, values may not match those reported directly by the state. Data are reviewed on a daily basis against internal and verified external sources and, if needed, adjusted. Last week data are from 10/31 to 11/6; previous week data are from 10/24 to 10/30; the week one month before data are from 10/3 to 10/9.
- Testing:** The data presented represent viral COVID-19 laboratory diagnostic and screening test (reverse transcription polymerase chain reaction, RT-PCR) results—not individual people—and exclude antibody and antigen tests, unless stated otherwise. CELR (COVID-19 Electronic Lab Reporting) state health department-reported data are used to describe county-level viral COVID-19 laboratory test (RT-PCR) result totals when information is available on patients' county of residence or healthcare providers' practice location. HHS Protect laboratory data (provided directly to Federal Government from public health labs, hospital labs, and commercial labs) are used otherwise. Some states did not report on certain days, which may affect the total number of tests resulted and positivity rate values. Because the data are deidentified, total viral (RT-PCR) laboratory tests are the number of tests performed, not the number of individuals tested. Viral (RT-PCR) laboratory test positivity rate is the number of positive tests divided by the number of tests performed and resulted. Resulted tests are assigned to a timeframe based on this hierarchy of test-related dates: 1. test date; 2. result date; 3. specimen received date; 4. specimen collection date. Resulted tests are assigned to a county based on a hierarchy of test-related locations: 1. patient residency; 2. provider facility location; 3. ordering facility location; 4. performing organization location. States may calculate test positivity other using other methods. Last week data are from 10/29 to 11/4; previous week data are from 10/22 to 10/28; the week one month before data are from 10/1 to 10/7. HHS Protect data is recent as of 11:59 EST on 11/08/2020. Testing data are inclusive of everything received and processed by the CELR system as of 19:00 EST on 11/07/2020.
- Hospitalizations:** Unified hospitalization dataset in HHS Protect. This figure may differ from state data due to differences in hospital lists and reporting between federal and state systems. These data exclude psychiatric, rehabilitation, and religious non-medical hospitals. In addition, hospitals explicitly identified by states/regions as those from which we should not expect reports were excluded from the percent reporting figure. The data presented represents raw data provided; we are working diligently with state liaisons to improve reporting consistency. Data is recent as of 22:28 EST on 11/08/2020.
- Hospital PPE:** Unified hospitalization dataset in HHS Protect. This figure may differ from state data due to differences in hospital lists and reporting between federal and state systems. These data exclude psychiatric, rehabilitation, and religious non-medical hospitals. In addition, hospitals explicitly identified by states/regions as those from which we should not expect reports were excluded from the percent reporting figure. Data is recent as of 17:24 EST on 11/07/2020.
- Skilled Nursing Facilities:** National Healthcare Safety Network (NHSN). Data report resident and staff cases independently. Quality checks are performed on data submitted to the NHSN. Data that fail these quality checks or appear inconsistent with surveillance protocols may be excluded from analyses. Data presented in this report are more recent than data publicly posted by CMS. Last week is 10/26-11/1, previous week is 10/19-10/25. Facilities that are undergoing reporting quality review are not included in the table, but may be included in other NHSN analyses.
- County and Metro Area Color Categorizations**
 - Red Zone:** Those core-based statistical areas (CBSAs) and counties that during the last week reported both new cases at or above 101 per 100,000 population, and a lab test positivity result at or above 10.1%.
 - Orange Zone:** Those CBSAs and counties that during the last week reported both new cases between 51–100 per 100,000 population, and a lab test positivity result between 8.0–10.0%, or one of those two conditions and one condition qualifying as being in the “Red Zone.”
 - Yellow Zone:** Those CBSAs and counties that during the last week reported both new cases between 10–50 per 100,000 population, and a lab test positivity result between 5.0–7.9%, or one of those two conditions and one condition qualifying as being in the “Orange Zone” or “Red Zone.”